

# PACKAGES

## LADIES' CLASSIC SPA 🕒 2.75 HRS - \$385

Enjoy a 60-minute Customized Massage followed by a 60-minute Classic Facial and your choice of a 45-minute Classic Manicure or Classic Pedicure.

## LADIES' SIGNATURE SPA 🕒 3.25 HRS - \$430

Your sensory journey begins with a 75-minute Dream Cloud Massage followed by a 60-minute Customized Organic Facial. Complete your experience with a 60-minute Signature Pedicure.

## LADIES' ULTIMATE SPA 🕒 4.25 HRS - \$520

A day of luxury awaits you! Indulge in our 60-minute Customized Massage, 75-minute Corrective Facial, 45-minute Classic Manicure and 45-minute Classic Pedicure. Lunch is included.

## MEN'S CLASSIC SPA 🕒 1.75 HRS - \$230

Enjoy a 60-minute Customized Massage followed by a 45-minute Sports Pedicure.

## MEN'S SIGNATURE SPA 🕒 2.75 HRS - \$395

Unwind and recharge with a 60-minute Customized Massage followed by a 60-minute Gentlemen's Refining Facial and a 45-minute Sports Pedicure.

### ENJOY THE SPA FACILITIES FOR THE DAY \$30

Please inquire with Spa Reception regarding availability.



# SIDE-BY-SIDE

## CUSTOMIZED MESSAGE

60 MIN. \$350/COUPLE 🕒 90 MIN. \$450/COUPLE

## HOT STONE MASSAGE

60 MIN. \$370/COUPLE 🕒 90 MIN. \$470/COUPLE

## DREAM CLOUD MESSAGE 🕒

75 MIN. - \$410/COUPLE

Enjoy a side by side DreamCloud Massage enhanced with our Signature Floral Dream Cloud Bath and Body oil you will enjoy a 45-minute customized massage followed by a 30-minute foot and scalp massage. As our gift to you, take home your bottle of Dream Cloud oil and continue your relaxation long after you leave.

## COUPLES' WRAP 🕒 60 MIN. \$360/COUPLE

Each guest can select from our three Eminence Organic Wrap options and enjoy this luxurious wrap and scrub side-by-side in our Couples' Room.

## RED EARTH ROMANCE PACKAGE 🕒

90 MIN. - \$380/COUPLE

Your journey begins with a 30-minute private plunge in our Geisha Tub. Your soak will be enriched with your choice of an aromatic essential oil blend. Adding to the tranquility, you will receive side-by-side 60-minute Customized Massages.

## DEEP EARTH ROMANCE PACKAGE 🕒

3 HRS. - \$595/COUPLE

Your experience begins with a 30-minute private plunge in our Geisha Tub enriched with your choice of an aromatherapy oil blend. Next, enjoy side-by-side 60-minute Customized Massages. Continue your journey with side-by-side 60-minute Signature Pedicures. Lunch is also included.



# Red Earth Spa

BANFF CARIBOU LODGE



# Red Earth Spa

BANFF CARIBOU LODGE

### HOURS OF OPERATION

The Red Earth Spa is located on the first floor of the Banff Caribou Lodge & Spa. Open 10:00 a.m. to 8:00 p.m. (Hours may vary slightly according to the season.) Call 1-866-379-0025 for an appointment.

### SPA & FITNESS FACILITIES

With most spa services, guests have complimentary access to the spa lounge, hotel hot pool, sauna and fitness area during their visit.

### SPA ARRIVAL

We recommend that you arrive at least 30 minutes prior to your treatment to allow time to check in, change and unwind with a sauna or soak in the hot pool. Please note that all treatments end on time, regardless of start time.

### SPA ENVIRONMENT

The serenity and quietness of the spa environment is important to all of our spa guests. Please refrain from using cell phones or other electronic devices while in the spa.

### AGE POLICY

Access available to spa services and facilities for those 16 years of age and older.

### CANCELLATIONS

Appointment changes or cancellations made within 24 hours of the treatment time will be subject to a 50% cancellation fee. Group cancellations are subject to policies as noted in the individual group contracts.

### SPA ATTIRE

A robe and sandals will be provided, as well as a locker to store your personal belongings. Professional draping by the therapist ensures your comfort and privacy during your service. Swimsuits are required in the hot pool area.

### SPA HOME CARE

Continue your wellness at home with your personalized skin care products. Featuring Eminence Organic Skin Care and our Pharmaceutical line SkinCeuticals, all available for purchase in our retail store. \*Receive a 10% discount on your purchases when you spend over \$75.

### GRATUITIES AND TAXES

Gratuities are at your discretion. 5% GST will be added to all prices shown. Group bookings will be subject to an automatic 18% gratuity.

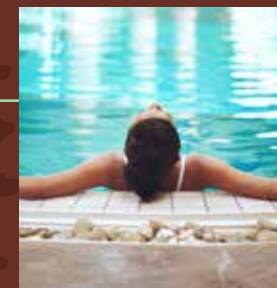
PRICES ARE SUBJECT TO CHANGE WITHOUT NOTICE.



COMFORT 🌿 WELLNESS 🌿 HARMONY



IN BANFF NATIONAL PARK



521 BANFF AVENUE, BANFF, AB  
PH: 403.762.9292  
TOLL FREE: 1.866.379.0025  
info@reearthspa.com

BOOK ONLINE AT  
REDEARTHSPA.COM

SPA MENU

# MASSAGE

## LUXURY RELAXATION TREATMENT 🌿

90 MIN. - \$200

Whether you are looking for pure relaxation or relief from tired, sore muscles, this treatment will leave you feeling rejuvenated and de-stressed. Begin with a hot water plunge infused with an aromatherapy oil of your choice in our private Geisha Tub followed by a 60-minute Customized Massage.

## DREAM CLOUD MASSAGE 🌿

75 MIN. - \$195

Incorporating our Signature Floral Dream Cloud Bath and Body oil, this aromatherapy massage will melt your stress away. Start with a 45 minute customized massage, followed by a 30-minute foot and scalp massage. As our gift to you, take home your bottle of Dream Cloud oil and continue your relaxation long after you leave.

## HOT STONE MASSAGE 🌿

60 MIN. - \$175 🌿 90 MIN. - \$225

Your body is massaged using soothing, heated stones which draw tension and stress from the muscles. Tension is relieved, the mind is calm and the body is relaxed, promoting overall well-being.

## FOOT MASSAGE 🌿 30 MIN. - \$85

This soothing treatment begins with hot, aromatic compresses on your feet followed by a relaxing foot massage to relieve tense, tired feet.

## CUSTOMIZED MASSAGE

60 MIN. - \$165 🌿 90 MIN. - \$215

Enjoy a relaxation or therapeutic massage customized to your needs and designed to relieve tension and stress.

# FACE + SKIN

## ANTI-AGING FACIAL 🌿 75 MIN. - \$210

Correct, Prevent and Protect is the SkinCeuticals way. Reduce the appearance of fine lines and wrinkles using our Advanced Pharmaceutical care line. These products promote elastin and collagen to restore a youthful and radiant complexion. A gentle glycolic peel will deeply exfoliate, leaving your skin bright and smooth. This treatment is enhanced with a luxurious face, neck, scalp, hand and foot massage. Walk away with renewed and revitalised skin.

## ORGANIC CORRECTIVE FACIAL 🌿 75 MIN. - \$210

Enjoy our Signature Eminence Organic products as we address your specific skin care concerns while bringing your skin back to the ideal PH balance. Enjoy a deep exfoliating treatment to see a corrective improvement to your skins texture and brightness. Enjoy a relaxing face, neck, scalp, hand and foot massage to complete your treatment. This facial leaves your skin silky with a beautiful glow.

## CLASSIC FACIAL 🌿 60 MIN. - \$170

This deep cleansing facial includes a professional skin analysis followed by an exfoliation, masque and facial massage. Our Pharmaceutical care line will enhance and brighten your skin, giving you the results you desire. Your skin will feel nourished, balanced and comforted.

## CUSTOMIZED ORGANIC FACIAL 🌿 60 MIN. - \$170

This indulgent, organic facial using products full of fruits, vegetables, herbs and spices, will leave your skin feeling vibrant and looking radiant. Erase pigmentation, reduce skin redness, clear away acne or diminish the signs of aging and start your pathway to beautiful skin!

## GENTLEMEN'S REFINING FACIAL 🌿 60 MIN. - \$170

Ideal for all skin types, this facial experience includes a clarifying masque, facial massage and exfoliation to refine and repair the skin. Massage work on the hands, feet and scalp is also included.

## REFRESHER FACIAL 🌿 30 MIN. - \$85

Refresh your skin with this express facial.



# WAX + TINT

Full selection of waxing and tinting services available starting from \$20



# BODY

## ORGANIC BODY WRAPS 🌿 60 MIN. - \$170

Using Eminence Organic face and body products, our wraps are designed to meet all your skincare needs. Each treatment includes an exfoliating sugar scrub, hydrating body wrap with a hot towel removal, nourishing mini facial with a scalp massage to complete this treatment leaving you feeling revitalized from head to toe.

**HYDRATE** with Chocolate & Coconut

**NOURISH** with Eminence Signature Stone Crop

## MESSAGE & BODY TREATMENT ADD-ONS:

Enhance your experience (any treatment 60 min. +) with one of these add-ons:

**FOOT MASSAGE 🌿 15 MIN. - \$40**

**SCALP MASSAGE 🌿 15 MIN. - \$40**

**PARAFFIN DIP FOR HANDS OR FEET - \$30**

Soothe aching joints and improve circulation with our warm wax treatment.

# HANDS + FEET

## SMOOTH EARTH SIGNATURE PEDICURE 🌿

60 MIN. - \$90

This deluxe treatment for your feet begins with a relaxing soak, followed by cuticle work and nail shaping. A gentle exfoliation and scrub followed by a paraffin treatment leaves legs and feet smooth and hydrated. Finish with an aromatic lower leg and foot massage and polish application.

## CLASSIC PEDICURE 🌿 45 MIN. - \$80

This pedicure has all the essentials for your feet. A relaxing foot soak, cuticle work and nail shaping are followed by a soothing foot and lower leg massage and completed with a polish application.

## SPORTS PEDICURE 🌿 45 MIN. - \$80

Enjoy a relaxing foot soak, nail and cuticle work followed by a rejuvenating foot and leg massage to get your feet ready for action.

## SMOOTH EARTH SIGNATURE MANICURE 🌿

60 MIN. - \$80

This luxurious treatment for your hands includes a hand soak, masque, soothing massage and hydrating, warm paraffin to leave your hands silky smooth. Nail shaping, cuticle work and polish application are included.

## CLASSIC MANICURE 🌿 45 MIN. - \$70

Restore your busy hands with this essential hand treatment. An aromatic soak, nail shaping and cuticle work are followed by a soothing hand and arm massage and completed with your choice of polish.

## LIGHT-CURED MANI/PEDI ADD-ONS

LED Lacquer Nail Colour 15 MIN. - \$20

LED Lacquer French Finish 15 MIN. - \$25

French Finish upgrade 15 MIN. - \$15

Shellac Removal 15 MIN. - \$10

BOOK ONLINE AT  
[WWW.REDEARTHSPA.COM](http://WWW.REDEARTHSPA.COM)